

How to Export to EndNote

EndNote export

1. Locate and open the Research Data Australia data record you would like to export a reference for.
2. Click the 'cite' button displayed in the data access section of the page. The Citation popout will be displayed.

The screenshot shows the Research Data Australia record page for the 'Palaeogeographic Atlas of Australia (a set of ten volumes)'. The page includes the Australian Government Geoscience Australia logo, the title, authors (Totterdell, J.M.; Cook, P.J.; Bradshaw, M.T.; Wilford, G.E.; Yeates, A.N.; Yeung, M.; Truswell, E.M.; Brakel, A.T.; Isem, A.R.; Olissoff, S.; Strusz, D.L.; Langford, R.P.), and a 'Dataset' label. A 'Cite' button is circled in blue. Below the button are sections for 'Licence & Rights', 'Access', and 'Contact Information'. A 'Brief description' section provides details about the atlas series.

3. From the bottom of the Citation popout, select the version of EndNote you would like to export the reference to.

The screenshot shows the 'Cite' popout window. It contains instructions to copy and paste a formatted citation or use a link to import into a bibliography manager. The citation text is: 'Totterdell, J.M. ; Cook, P.J. ; Bradshaw, M.T. ; Wilford, G.E. ; Yeates, A.N. ; Yeung, M. ; Truswell, E.M. ; Brakel, A.T. ; Isem, A.R. ; Olissoff, S. ; Strusz, D.L. ; Langford, R.P. (2001): Palaeogeographic Atlas of Australia (a set of ten volumes). .dataset. <http://pid.geoscience.gov.au/dataset/ga/35880>'. At the bottom, three buttons are circled in blue: 'EndNote', 'EndNote Web', and 'EndNote Help'.

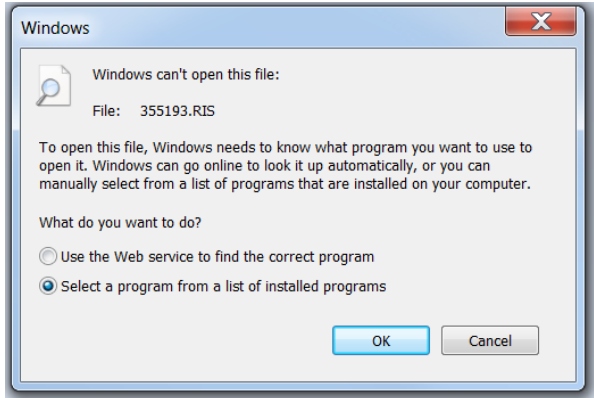
Authors will be arranged as they are sorted under the record's title.

4. If you are importing to a desktop version of EndNote and you have configured your machine to open 'RIS' files with EndNote, the reference should be imported directly.

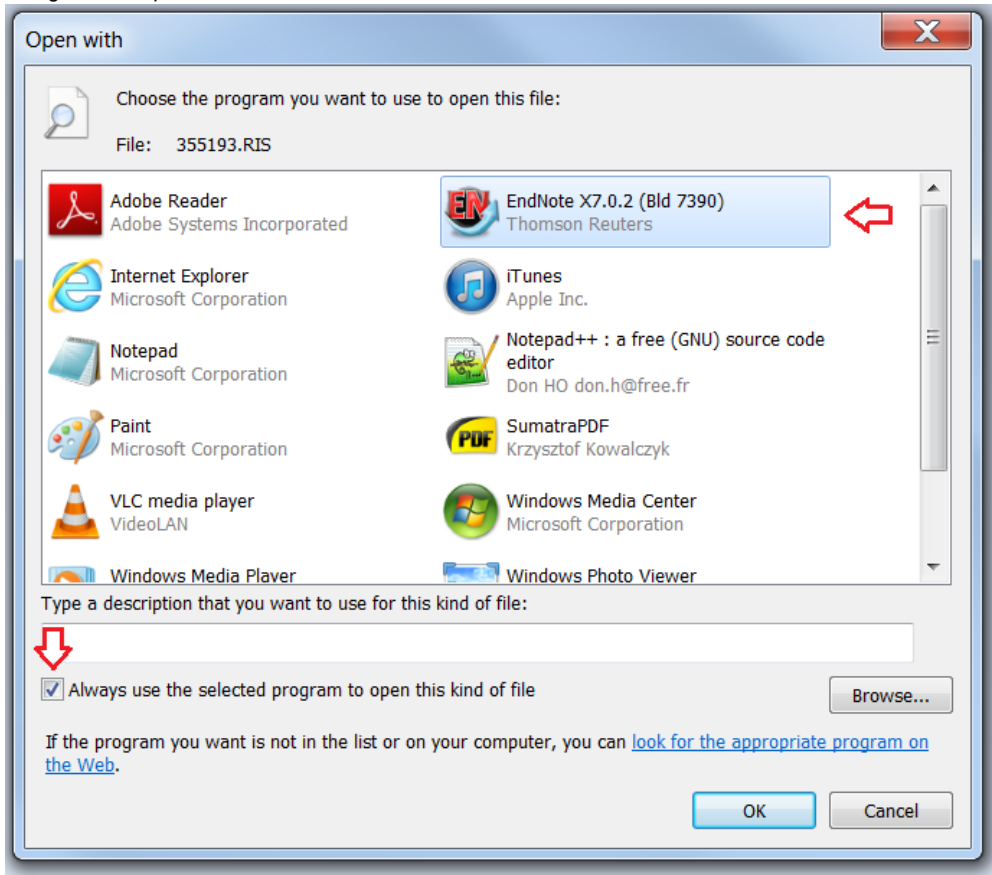
Configuring your computer to open 'RIS' files in EndNote.

Windows

1. Upon selecting to export you will be prompted to either save or open the file. Select 'Open'.



2. In the Windows dialog select the option 'Select a program from a list of installed programs'. An 'Open with' dialog box will open.



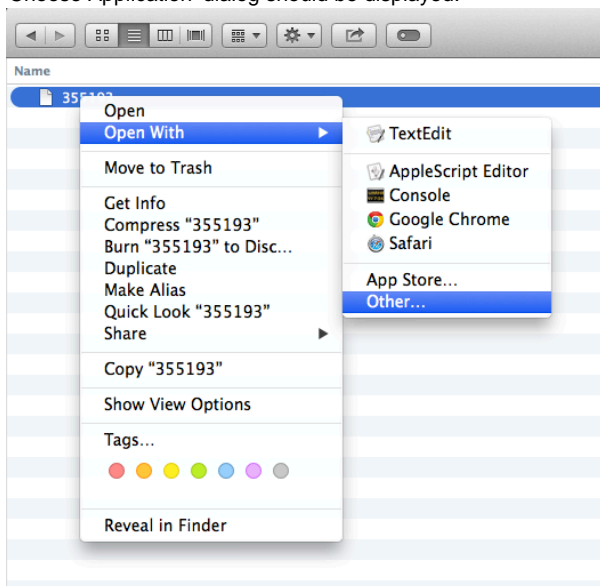
3. Before locating EndNote in the list of options, ensure the 'Always use the selected program...' check box is selected.
4. Locate EndNote in the list of options, selected it and click 'Ok'. The reference should be imported into EndNote.

If EndNote is not listed you will need to use the 'Browse' button to locate it on your computer.

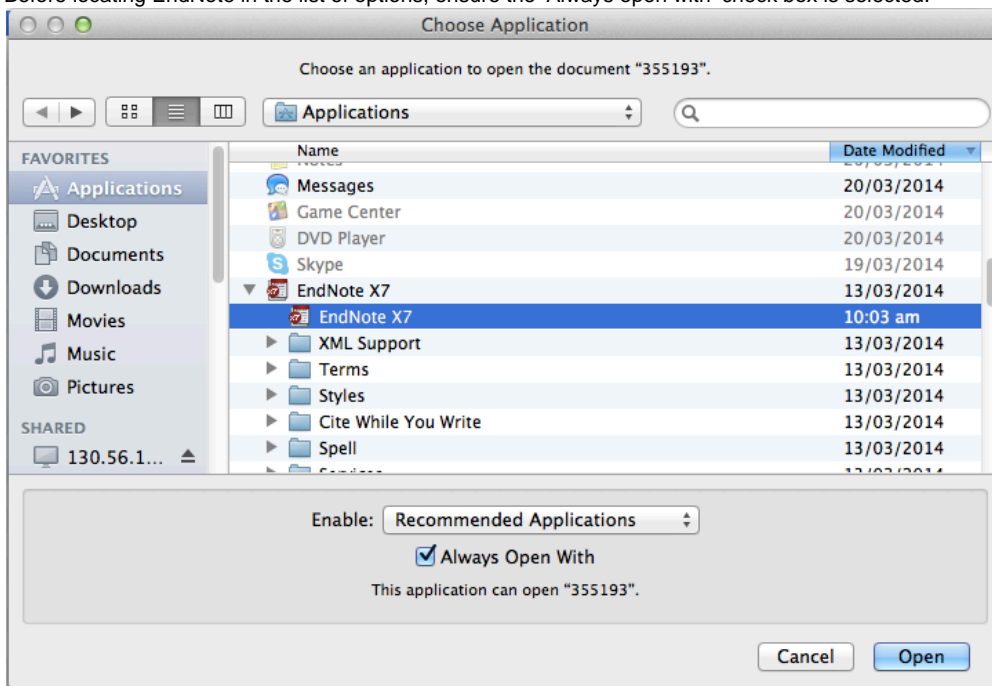
Mac

1. Upon selecting to export the file, it will be downloaded to your machine. Most likely in your 'Downloads' folder.

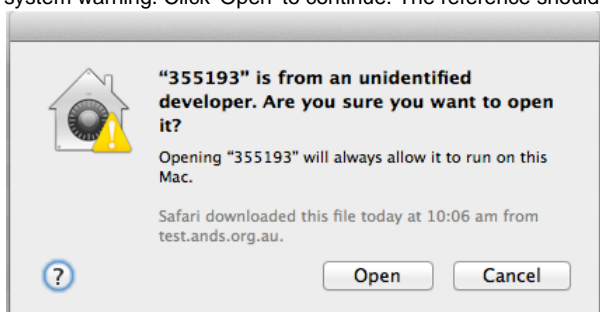
2. Navigate to the file in Finder, and while holding down the 'Control' key, click the file then select 'Open With > Other'. The 'Choose Application' dialog should be displayed.



3. Before locating EndNote in the list of options, ensure the 'Always open with' check box is selected.



4. Locate EndNote in the list of options, selected it and click 'Ok'. Depending on your security settings you may be presented with a system warning. Click 'Open' to continue. The reference should be imported into EndNote.



If EndNote is not listed you will need to locate it on your computer.

More information

- [Modifying the dataset reference type in EndNote X7 or X8](#)

[« Exporting Data References from RDA](#) [Modifying the dataset reference type in EndNote X7 or X8](#) »